

SURVEY REPORT

Section 25826, T 40 N, R 17 W, Thompson Twp., Schoolcraft County, Michigan

10... Surveys
 Pages 181-189, incl.

Project: Boundary Survey & Parcel Division
 Certified to: George Killackey
 Kenneth Tyler



Scale: 1"=200'
 Date: Nov. 22, 1977

SURVEYOR'S CERTIFICATE

I HEREBY CERTIFY that I have surveyed and mapped the land delineated hereon on this date and that the ratio of closure on the unadjusted field observations was 1/19,789' and all the requirements of Act 132 have been complied with.

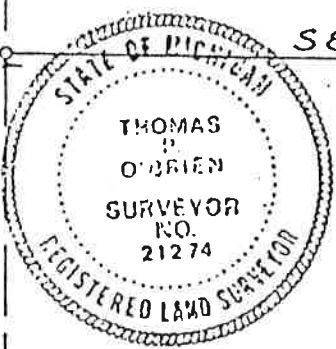
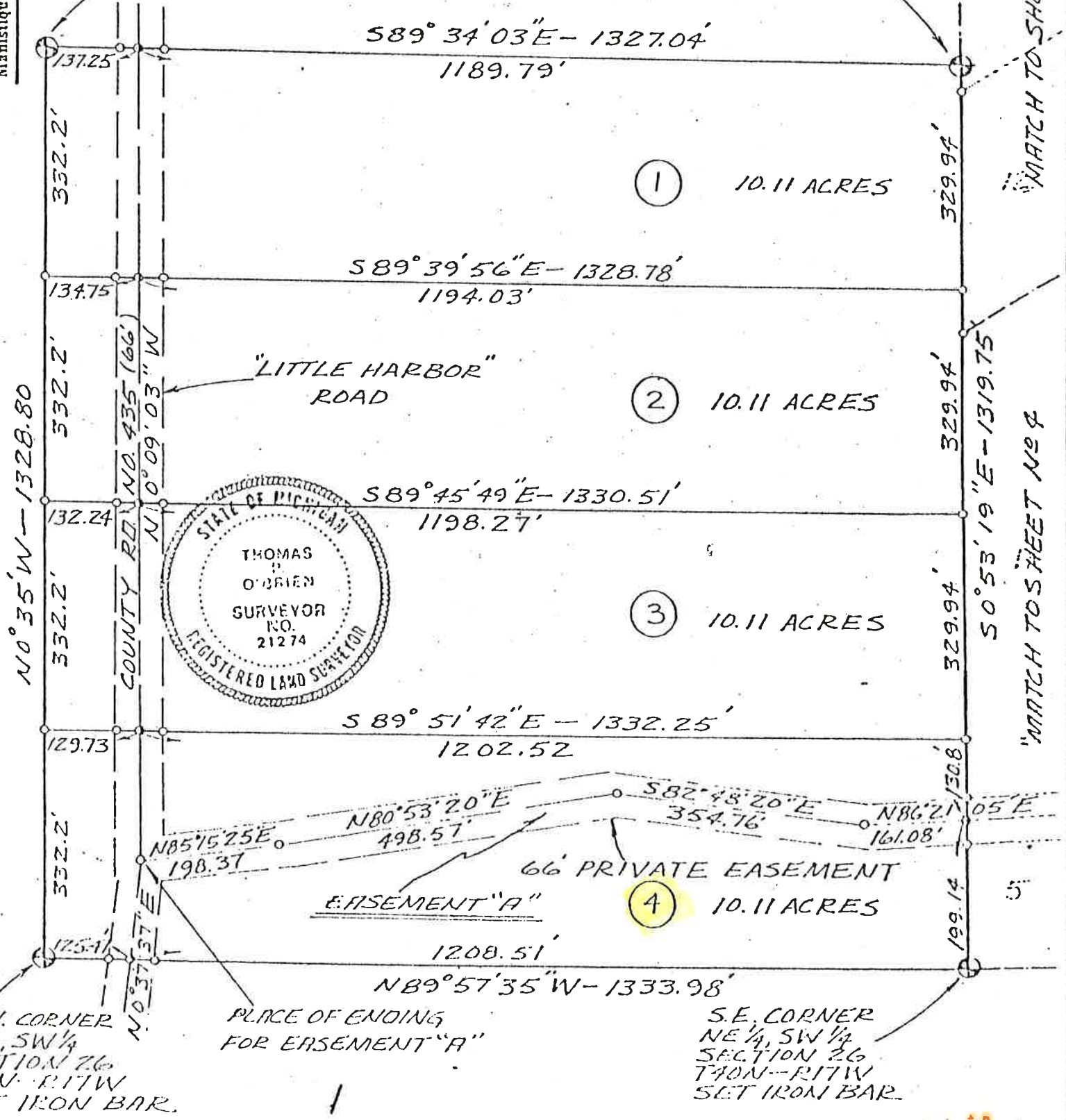
Signed: Thomas P. O'Brien
 Thomas P. O'Brien, RLS 21274

Legend:

- Dimensions are in feet and decimals thereof.
- Bearings are relative and are related to a solar observation.
- "o" denotes Iron Bar Set.

N.W. CORNER
 NE 1/4, SW 1/4
 SECTION 26
 T40N-R17W
 SET IRON BAR

CENTER CORNER
 SECTION 26
 T40N-R17W
 SET IRON BAR



THOMAS P. O'BRIEN
 226 N. A.ighton
 Manistique, Michigan 49854
 Phone 906-341-2039

S.W. CORNER
 NE 1/4, SW 1/4
 SECTION 26
 T40N-R17W
 SET IRON BAR

S.E. CORNER
 NE 1/4, SW 1/4
 SECTION 26
 T40N-R17W
 SET IRON BAR