

SCALE: 1"=300'


DATE: Jan. 21, 1993

SURVEYOR'S CERTIFICATE:

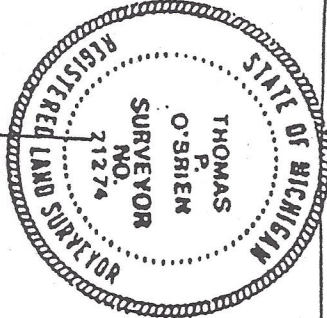
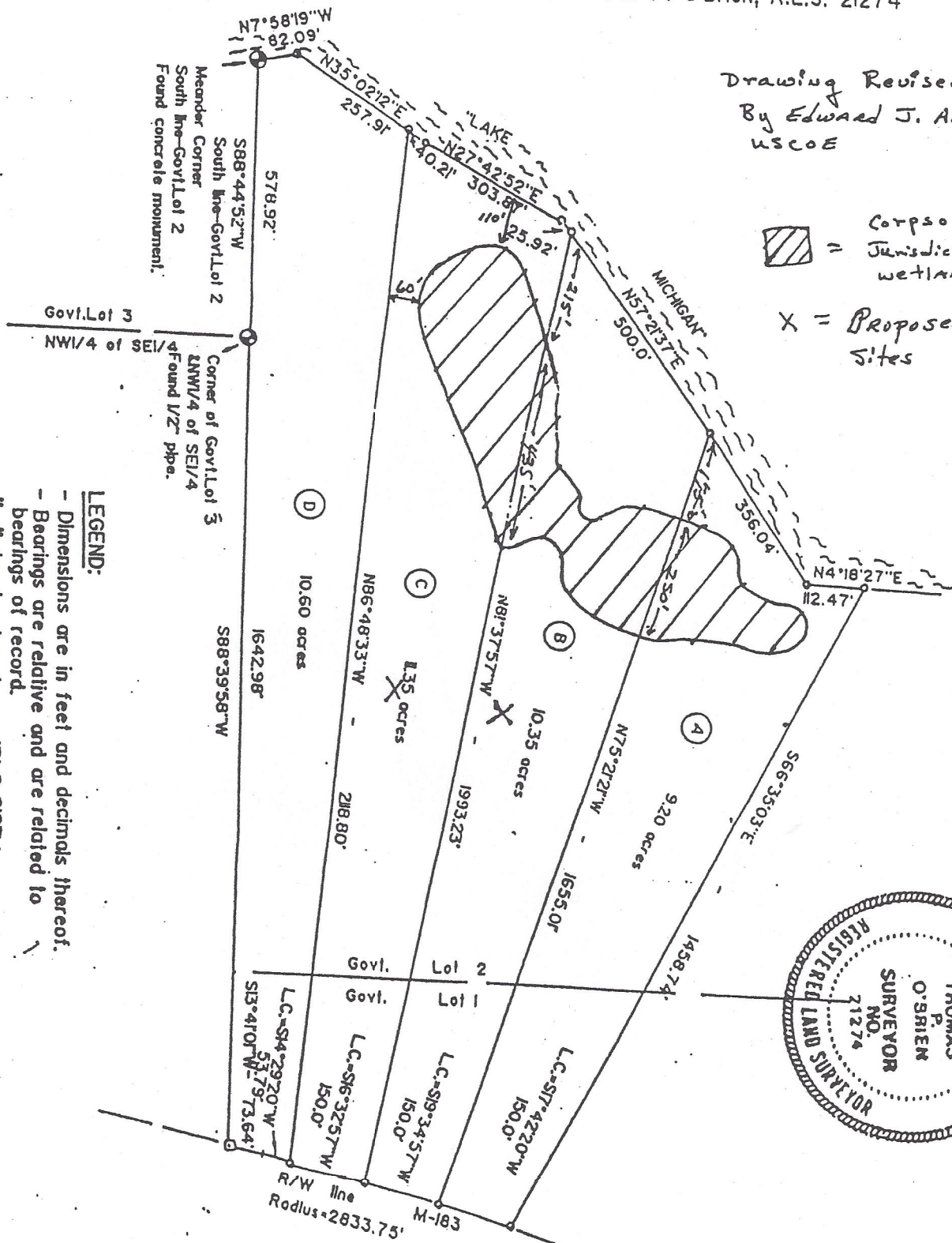
I HEREBY CERTIFY that I have surveyed and mapped the land delineated hereon on this date, that the ratio of closure on the unadjusted field observations was less than 1/5000' and that all the requirements of Act 132, P.A. of 1970, as amended, have been complied with.

Signed: Thomas P. O'Brien
Thomas P. O'Brien, R.L.S. 21274

Drawing Revised 6/26/93
By Edward J. Arthur,
USCOE

 = Corps of Engineers
Jurisdictional wetland

X = Proposed Building Sites



LEGEND:

- Dimensions are in feet and decimals thereof.
- Bearings are relative and are related to bearings of record.
- "o" denotes iron bar w/RLS 21274 cap set.
- "□" denotes concrete monument found.
- L.C. denotes long chord.