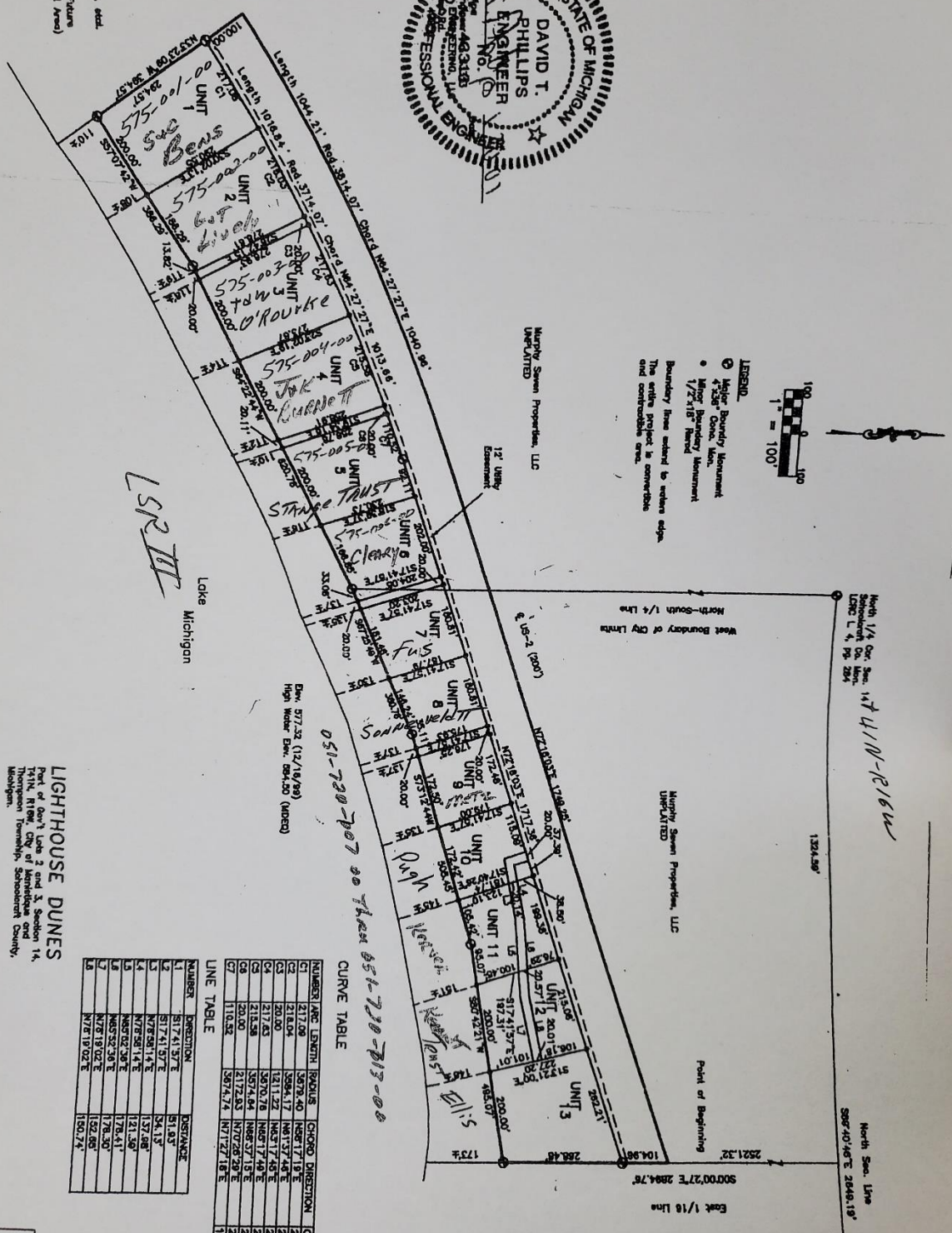


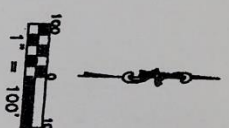
Z.T. Phillips, et al.
UNPLATTED
(Proposed Future
Development Area)



LEGEND

- ⊙ Major Boundary Monument
- ⊙ Minor Boundary Monument
- ⊙ 1/2" x 1/8" Flared

Boundary lines subject to surface edges and comparable area.



CURVE TABLE

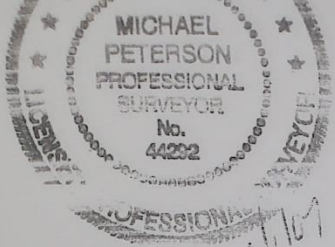
NUMBER	ARC LENGTH	BEARS	CHORD	DIRECTION	CHORD
C1	217.00	S87°18'40"	N87°17'19"		217.00
C2	217.00	S87°18'40"	N87°17'19"		217.00
C3	217.00	S87°18'40"	N87°17'19"		217.00
C4	217.00	S87°18'40"	N87°17'19"		217.00
C5	217.00	S87°18'40"	N87°17'19"		217.00
C6	217.00	S87°18'40"	N87°17'19"		217.00
C7	110.32	S87°4'7"	N71°27'18"		110.32

LINE TABLE

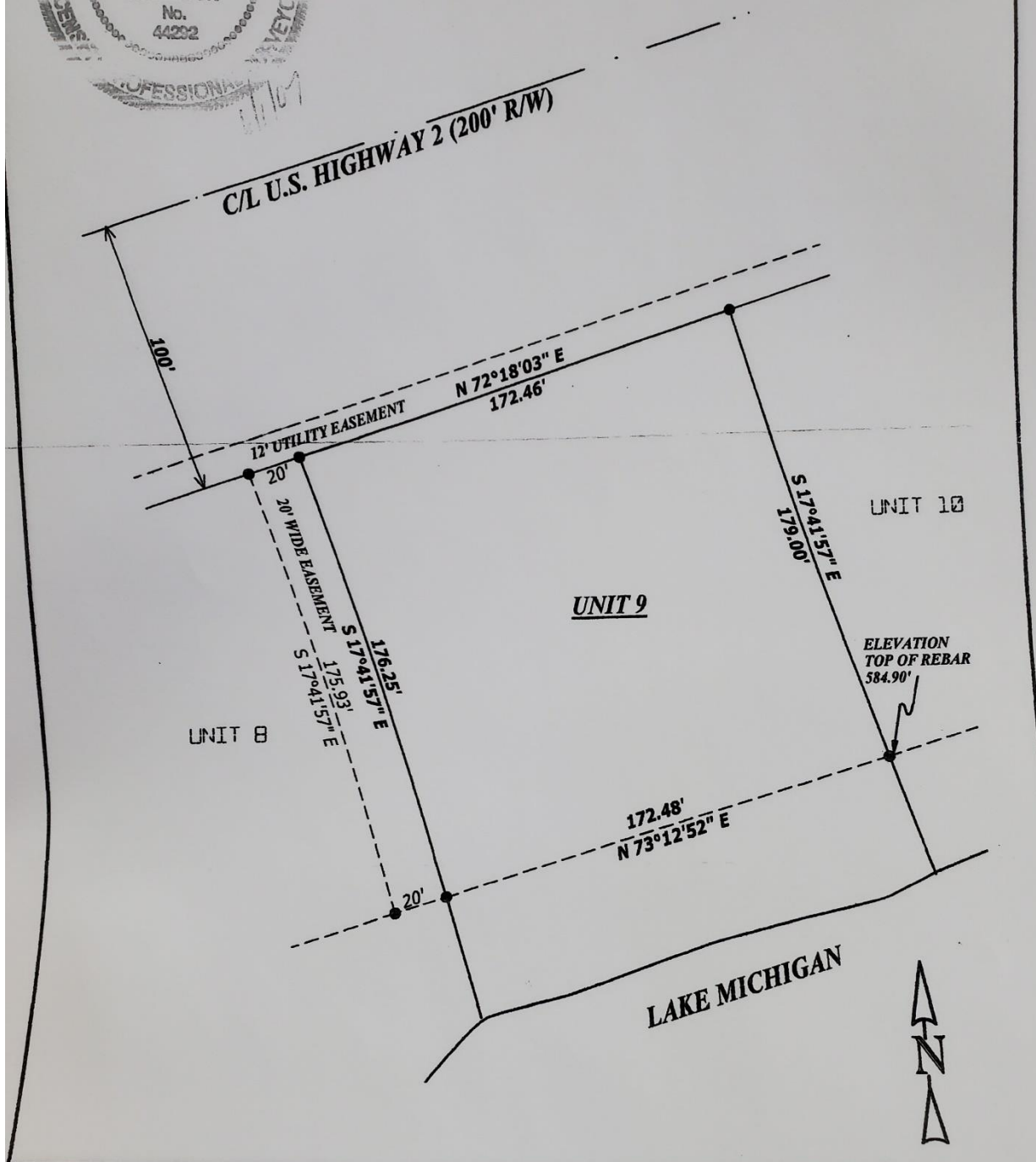
NUMBER	DIRECTION	DISTANCE
1	S17°41'57"E	51.83'
2	S17°41'57"E	54.13'
3	N78°58'14"E	137.98'
4	N78°58'14"E	121.50'
5	N85°02'38"E	178.41'
6	N85°52'38"E	178.30'
7	N78°19'02"E	132.85'
8	N78°19'02"E	130.74'

LIGHTHOUSE DUNES
Part of Gov't Lots 2 and 3, Section 14,
T41N, R10W, City of Mendon and
Thompson Townships, Schoenowick County,
Michigan.

Survey Plan



ORIGINAL



<p>Peterson Surveying 1223 N. LINCOLN ROAD ESCANABA, MI. 49829 (906) 789-7878 FAX (906) 789-2729</p>	<p>I, MICHAEL PETERSON, A PROFESSIONAL SURVEYOR IN THE STATE OF MICHIGAN, CERTIFY THAT I HAVE SURVEYED AND MAPPED THE ABOVE PARCEL OF LAND IN ACCORDANCE WITH P.A. 132 OF 1970, THAT THE RATIO OF THE UNADJUSTED FIELD OBSERVATIONS IS WITHIN THE ACCEPTED LIMITS.</p>	<p>JOB NUMBER: 0507060</p>		<p>LEGEND (M) MEASURED (R) RECORDED ● IRONS FOUND ○ IRONS SET ⊕ CONTROL CORNER</p>
		<p>SURVEY FOR: CARL METZ</p>		
		<p>DATE: 05/30/07</p>	<p>SCALE: 1" = 50'</p>	