

OF THE NORTHWEST 1/4, ALL IN SECTION 7, TOWNSHIP 43 NORTH, RANGE 11 WEST, NEWTON TOWNSHIP, MACKINAC COUNTY, MICHIGAN.

**NORTHWEST CORNER SECTION 7**  
 FOUND REMON IRON IN MON. BOX.  
 TIES:

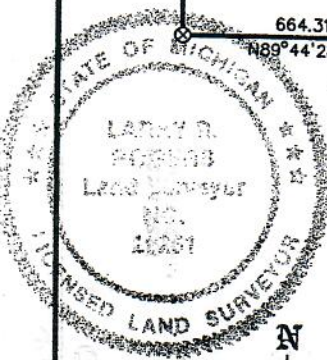
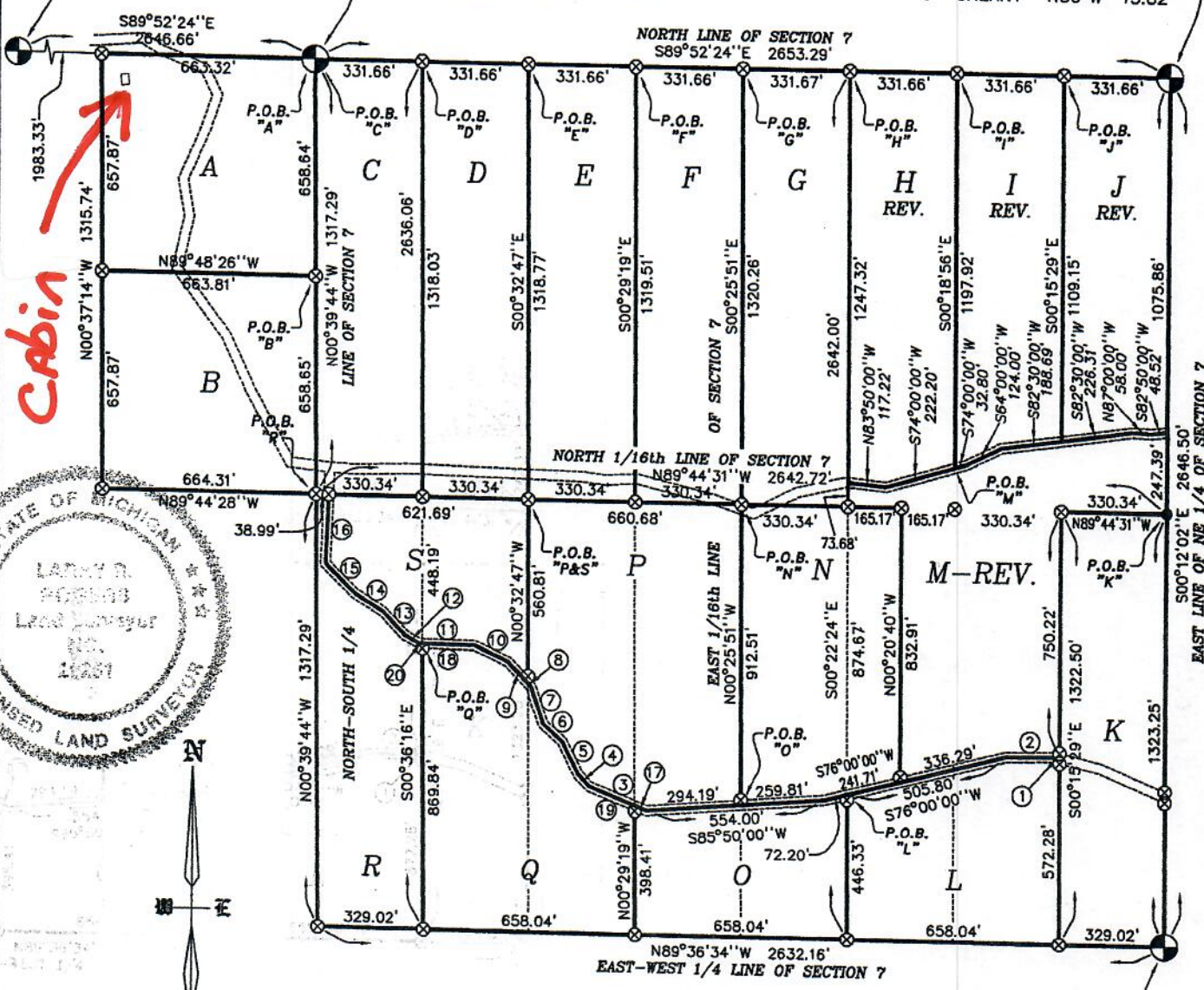
P. POLE N44°E 72.35'  
 6" MAPLE N70°E 33.43'  
 10" MAPLE S30°E 85.56'  
 10" MAPLE WEST 44.78'

**NORTH 1/4 CORNER SECTION 7**  
 SET 1/2" IRON WITH CAP.  
 TIES:

9" W. BIRCH N50°E 22.63'  
 7" MAPLE S11°E 13.16'  
 6" MAPLE S48°W 20.07'  
 7" MAPLE N12°W 23.60'

**NORTHEAST CORNER SECTION 7**  
 FOUND DNR PIPE WITH ALUMINUM CAP.  
 TIES:

18" BALSAM N10°E 65.46'  
 6" CHERRY N55°E 37.36'  
 8" CHERRY S10°W 0.81'  
 9" CHERRY N50°W 13.82'



SCALE: 1" = 500'



**LEGEND**

- FOUND CORNER
- ⊗ SET 1/2" IRON W/ CAP NO. 29251 IN PREVIOUS SURVEY

LINE	BEARING	DISTANCE
1	N77°10'00"W	16.00'
2	S89°00'00"W	152.00'
3	N68°20'00"W	191.00'
4	N43°20'00"W	51.00'
5	N27°10'00"W	107.00'
6	N48°40'00"W	81.00'
7	N19°00'00"W	118.00'
8	N45°00'00"W	11.56'
9	N45°00'00"W	88.44'
10	N65°10'00"W	116.00'
11	N89°00'00"W	173.00'
12	N62°00'00"W	52.00'
13	N44°00'00"W	97.00'
14	N58°30'00"W	103.00'
15	N45°20'00"W	130.00'
16	N02°00'00"E	210.04'
17	S68°20'00"E	38.66'
18	S89°00'00"E	163.17'
19	S68°20'00"E	152.34'
20	S89°00'00"E	9.83'

**EAST 1/4 CORNER SECTION 7**

SET 1/2" IRON WITH CAP.

TIES:  
 9" IRONWOOD N08°E 16.12'  
 12" S. MAPLE N57°E 26.76'  
 8" S. MAPLE S45°E 2.98'  
 16" SPRUCE N67°W 20.97'

I HEREBY CERTIFY THAT I HAVE SURVEYED AND MAPPED THE LAND PLATTED AND DESCRIBED HEREON, THAT THE RATIO OF CLOSURE OF THE UNADJUSTED FIELD OBSERVATIONS IS AT LEAST 1/97,500 AND